



We reserve the right to make changes to the product specification as technical developments dictate and without prior notice. Pictures shown in this brochure are for illustrative purposes only and are not binding in specification or detail. For technical reasons associated with colour reproduction, the colours shown give only an indication of shade, no guarantee can be given that they will exactly match the actual product finish.

A young couple is sitting back-to-back on a polished wooden floor in a bright, modern interior. The man, on the left, is wearing a light green t-shirt and khaki pants, looking off to the side. The woman, on the right, is wearing a pink long-sleeved shirt and white pants, looking towards the camera. Large windows in the background let in natural light, and a bookshelf is visible behind them.

# INSPIRATION COLLECTION

---

Energy efficient window and doors

# DESIGNED FOR BEAUTIFUL HOMES

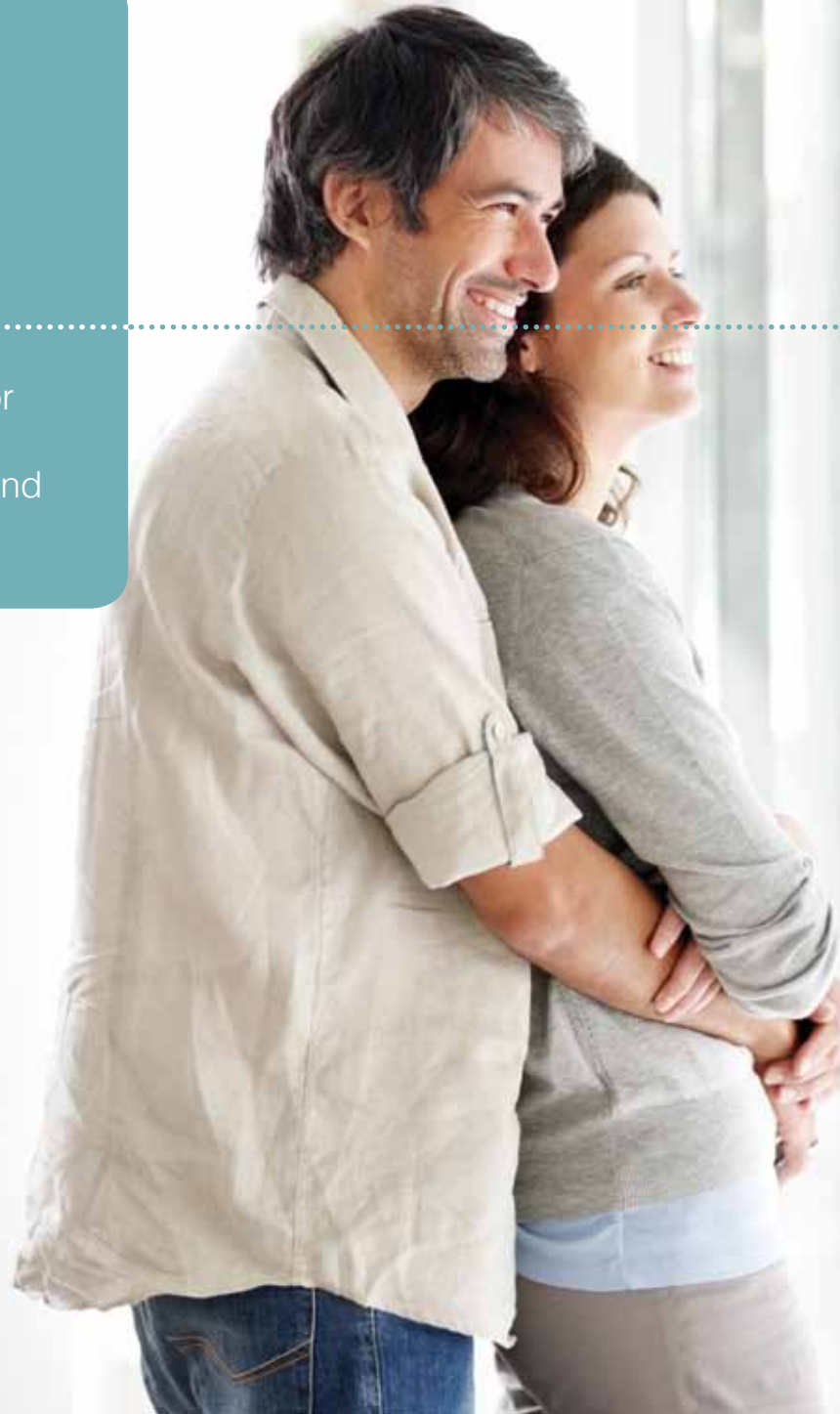
---

Whether you're looking to extend, refurbish or restore, the Inspiration Collection of window and door designs will transform your home and increase its value – no matter what the style.

## Designed for you

Your home is often the largest investment you'll ever make and whether you're looking to create a peaceful sanctuary, an energetic family hub or a stylish residence, at some point you'll want to improve your living space.

Finding the right solution from an installer you can trust is the first step to achieving your dream. Rest assured with our company, your home is in safe hands.







## Why choose the Inspiration Collection?

The Inspiration Collection of windows, doors and conservatories is installed in thousands of homes all over the country, manufactured from Spectus Systems' Elite 70 profiles.

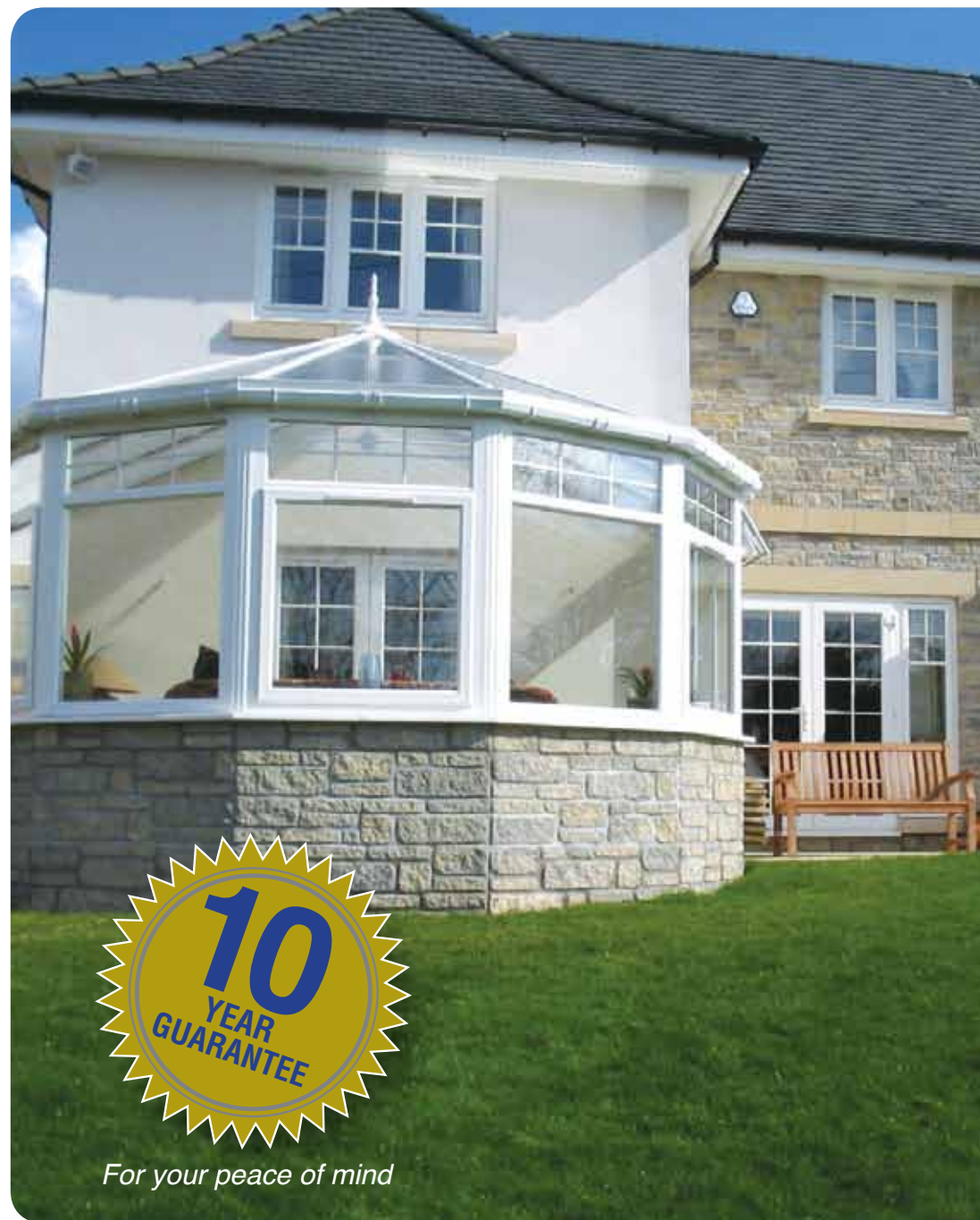
We believe in providing the very best products, ensuring you receive consistent quality together with outstanding service and after-care. We guarantee that your investment will be handled with the utmost care for your complete peace of mind.

### We come highly recommended

Our advanced-performance PVC-U windows and doors are the perfect choice, whether you live in a charming period cottage or a modern city home.

### Our products

We offer a wide choice of traditional or contemporary colours and styles with stunning accessories to complement your home. Our windows and doors provide superior protection against heat-loss and noise, even in extreme conditions. Choosing our PVCu windows and doors protects the planet's resources and saves millions of trees. Low-maintenance PVCu windows and doors do not require painting, which reduces the consumption of additional harmful materials. Manufacturing is confined to the UK, minimising transportation and fuel consumption.

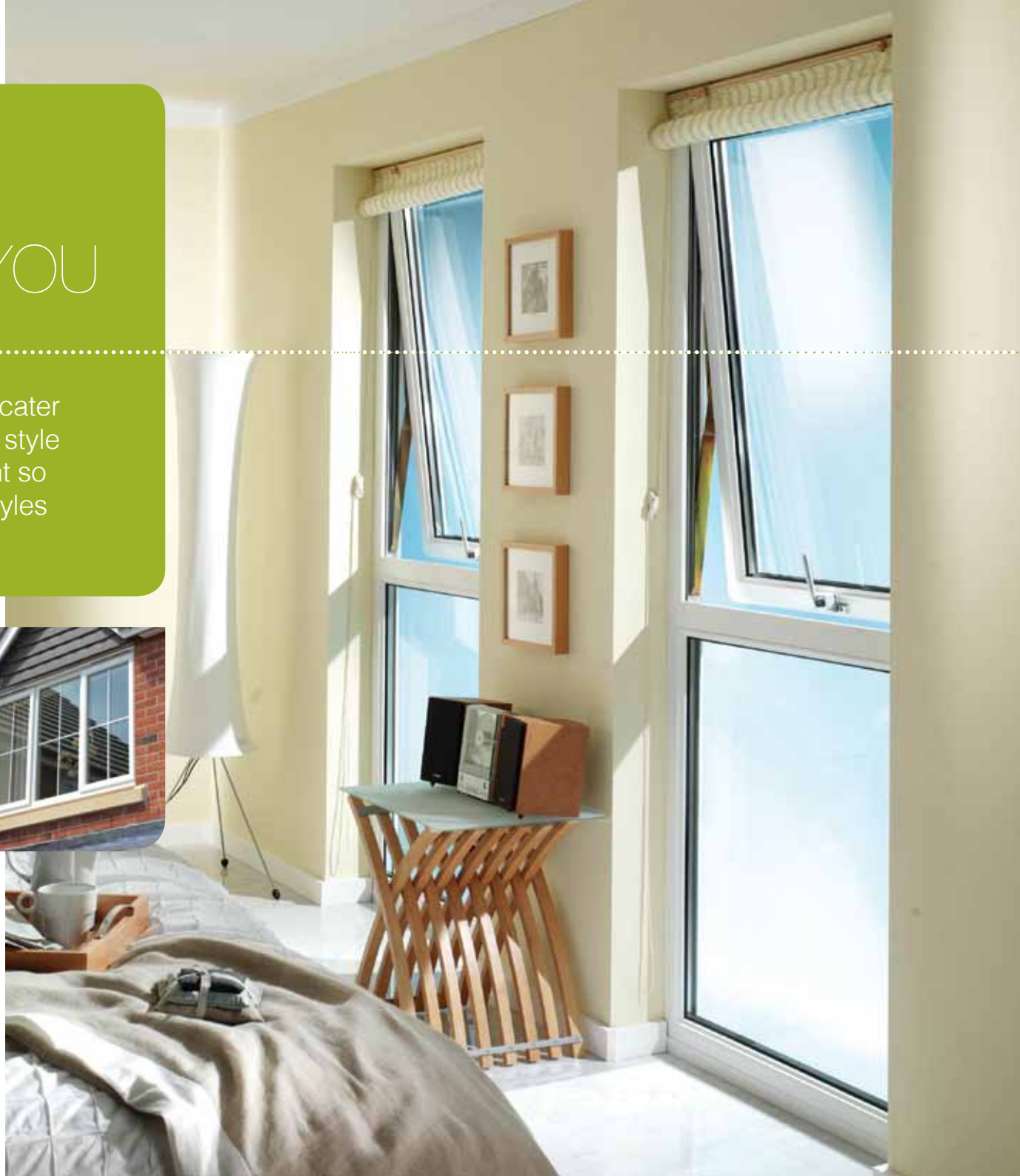


# WINDOWS DESIGNED FOR YOU

Our tailor-made service is designed to cater for your individual needs, whatever the style of your property. Every home is different so we offer a wide range of colours and styles for you to choose from.



Our windows will add warmth, security and enhanced thermal efficiency to your home. Their PVC-U frames provide optimum strength and excellent weathering performance, and with minimal maintenance, they will retain their appearance year after year.







### Casement

Popular casement windows are traditional, open out, top or side hung openers. The size and style can be tailored to your exact specification.



### Tilt & Turn

Combining style with practicality, Tilt & Turn windows can be tilted inwards for ventilation or hinged inwards to allow cleaning from the inside.



### Reversible

The Reversible window is a fully-reversible PVC-U solution, ideal for locations that have restricted access for cleaning.

## WINDOW FEATURES

- Manufactured using the market-leading Spectus Elite 70 profile system.
- A choice of traditional or contemporary frame styles
- A-rated for increased thermal efficiency
- Superior weather protection
- Stunning accessories such as Georgian bars and decorative Horns
- Wide range of colour and woodgrain finishes
- 10-year guarantee



# WINDOWS

## VERTICAL SLIDING

Combines period charm with modern practicality. The Vertical sliding sash window is manufactured to provide all the technical benefits of PVCu without compromising on period design and quality.







Their superior functionality and authentic looks create the perfect, cost-effective solution for period-style homes

### Why choose The Vertical Slider?

Our Vertical Slider is an authentic looking sash window and combines all the benefits of high-performing modern materials and functionality with period character and design.

Precision-engineered PVC-U frames provide superior strength, thermal protection and weathering performance, and with minimum maintenance they will retain their appearance year after year.

### Traditional styling with modern benefits

Great care has been taken to retain the distinctive styling of traditional sash windows, whilst providing all the benefits of modern technology. Our vertical slider offers superior thermal efficiency, cutting your fuel bills and reducing your home's carbon footprint. With excellent weathering performance and ventilation, our Vertical Slider is fully approved and certified to appropriate British standards.



## WINDOW FEATURES

- Manufactured using the market-leading Spectus Vertical Slider profile system
- 24mm glazing as standard for superior thermal efficiency
- Kitemarked to BS EN 12608 and BS 7950 and BBA approved
- Low-maintenance PVC-U profile with traditional styling
- Balance mechanism ensures smooth operation
- Tilt-open facility ease of cleaning
- Optional accessories such as Georgian bars and decorative Horns
- 10-year guarantee





# ENTRANCE DOORS

From decorative to the very simplest designs, we offer a complete range of entrance doors that you can tailor to suit your individual needs.



Our doors are expertly manufactured and installed to the same high standards as our windows and conservatories, offering the highest levels of security and insulation.



## PVC-U doors

We offer an outstanding collection of PVC-U door panels with a vast array of designs, colours and glass options to choose from. Our PVC-U doors are available in a choice of authentic wood-effect and foiled finishes to match your windows for a stylish and co-ordinated finish. All doors feature secure multi-point locking systems and require minimal maintenance.

- Strong, secure and reliable for optimum performance
- Choice of colours, styles and finishes
- Complete range of glass options
- Stylish accessories to suit your taste
- Expert installation
- 10-year guarantee



A selection of the finishes available.

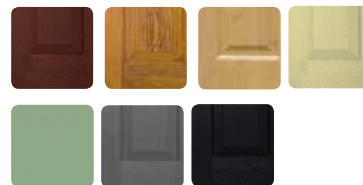


## Composite doors

Composite doors are a stunning alternative to PVC-U, offering all the benefits of security and low-maintenance, but with the traditional look of timber. The Solidor Collection is an outstanding range of solid laminate timber-core composite doors that combine classic or contemporary styling with Secured by Design locking for a stunning yet ultra-secure entrance to your home.

Choose a solid or part-glazed door and then personalise with features such as Georgian bars or classic lead or decorative glass. We can also design side panels to complement your door for a grander entrance.

- Ultra-durable, secure and reliable for optimum performance
- All the benefits with traditional timber appearance
- Wide range of colours, styles and finishes
- Stylish accessories and glass options to suit your taste
- Expert installation
- 10-year guarantee



A selection of the finishes available.





# STYLISH DOORS

Patio doors open up your home, bathing it with air and light. They seamlessly blend the outdoors with the indoors but when closed they offer maximum security to keep you safe and secure.



Spectus Patio doors are a versatile option and ideal for both conservatories and porches.





## Patio Doors

Patio doors are a flexible solution and can be used as either a room divider, a porch entrance or to access a conservatory. Our sliding patio door incorporates the latest technology to provide a secure, durable, easy-glide, easy-access entrance. The choice of finishes, combined with the option of two, three or four pane doors, enables you to tailor your finish to suit any size and style of property.

## PRODUCT FEATURES

- Choose from two, three or four panel options providing choice in the door style available
- Smooth sliding action - sliding panel can be fitted to the inside or outside
- A wide range of colour and woodgrain foil finishes available
- Compatible with our full product range for a consistent finish
- 10 year guarantee





# STYLISH DOORS

Bi-fold and French doors open up your home, bathing it with air and light. They seamlessly blend the outdoors with the indoors but when closed they offer maximum security to keep you safe and secure.



French doors and Bi-fold doors are a style alternative to a patio door and a great way to fully open up a room to provide additional light and space.





### French doors

With French doors you can make the most of your space and maximise the opening to the outside. Our doors are available a wide range of finishes with the additional options of side panels and patterned glass to provide a stunning new look to any home.

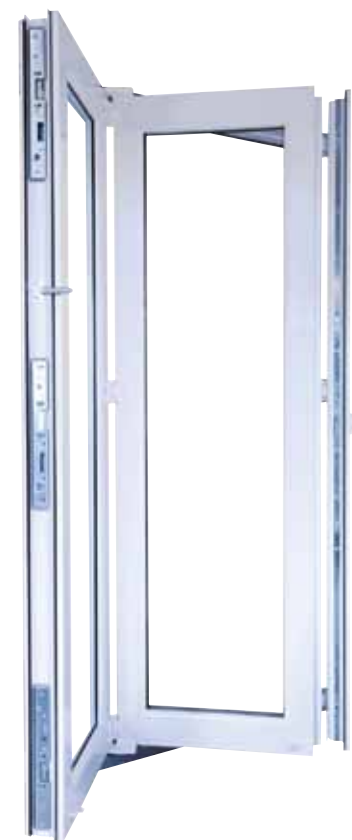
- Compatible with all other Inspiration Collection products for a consistent finish
- Choice of inward or outward opening



### Bi-folding Doors

Bi-folding doors open up the possibilities of your home, maximising the flow of fresh air and light into your room. Our bi-folding door's elegant slim profiles and discreet hinges make it one of the best looking PVC-U solutions available. A wide range of configurations can be accommodated, all of which can open in or out.

- Compatible with all other Inspiration Collection products
- Doors fold back concertina-style to maximise space
- Bottom track can be concealed for reduced threshold height
- A choice of configurations featuring 2 to 7 panels
- Rigorously weather tested to the requirements of PAS23





# CONSERVATORIES & ORANGERIES

.....

If you need extra space but don't want to move house, why not consider a conservatory or an orangery? We provide a complete package to ensure seamless delivery of your new lifestyle extension.



All work is carried out to the latest Building Regulations and covered by a 10 year guarantee.



## Loggia Conservatories

We also offer the Loggia conservatory, with its architectural features inspired by the Italian Renaissance period.

Striking aesthetics combine with revolutionary engineering to harmonise perfectly with your home's design. With maximum light, solid construction and internal plastered walls and ceilings, you can create a 'real room' at a fraction of the cost of an extension.



# CONSERVATORY FEATURES

- Ultra-durable, secure and reliable Spectus profile system for optimum performance
- Features market-leading Conservatory Roof system
- 10 Year Guarantee
- BBA Accredited

A conservatory will add space, light and value to your home. We offer a wide range of styles and will be happy to work with you to ensure you get the conservatory of your dreams.

## Styles

Our Conservatories are available in a number of styles to ensure they are a seamless addition to your property. Whatever the age and style of your home, speak to your installer to discuss which solution is best for your property.

## Orangeries

For something truly special consider an orangery. With their rectangular shape and light spacious design an orangery makes an ideal playroom, dining room or even a kitchen.



Sunroom



Orangery



Lantern



Georgian/Edwardian



Victorian



P-Shaped



# GUARANTEE & SECURITY

We offer a 10-year guarantee on installations so you can be confident that in the unlikely event of something going wrong with your windows, doors or conservatory you'll be fully covered.

## Window Security

All our windows incorporate DGS Group Twin-Cam Security Locking (TSL), a major breakthrough in window locking systems which offers more than double the security of industry standard products and exceeds the requirements of British Standard BS7950.

## Door security

Our doors are fitted with the Yale Lockmaster 2-hook, 2-roller multi-point locking system with patented pre-compression technology to deliver optimal weather proofing and security performance. Corrosion resistant to EN1670:2007 Grade 4 and tested to a minimum of 100,000 cycle operational lifespan.

## Handles

All our products are fitted with Fab & Fix ironmongery with its uncompromising quality and reliability. Die-cast components exceed industry standards and all ironmongery is available in a choice of 12 finishes and comes with a 10-year mechanical guarantee.

## Window Security

Twin Cam Security Locking (TSL) is one of the strongest & most reliable locking systems available, offering homeowners a host of reassuring benefits.



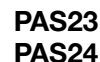
## Door Security

Lockmaster is the UK's most popular multi-point locking system. A number of different variants including shootbolt-ready models make this one of the most versatile locking systems available



## Handles

Fab & Fix is the UK's leading designer and distributor of perfectly suited hardware and a company with its reputation built on iconic looks and quality that never lets you down.



# ENERGY-SAVING WINDOWS

## SAVING YOU MONEY

Windows and doors are energy-rated under the same system as household appliances such as washing machines and fridges, which are graded between A and G, depending on their environmental efficiency – 'A' being the best and most efficient.

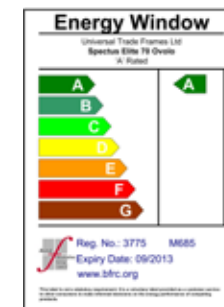
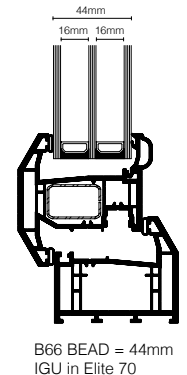
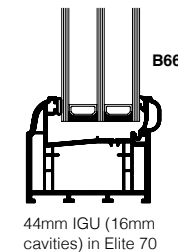


On the outside, energy-rated windows look just as smart and stylish as the best frames on the market. Inside, it's a different story. A-rated windows can significantly reduce your annual heating bills and as the price of fuel rises, your savings will continue to grow.



## Benefits

- Fitting A-rated windows can save you money on heating bills
- A-rated windows are one of most effective ways to save energy and reduce CO<sub>2</sub> emissions
- A-rated windows reduce heat loss by more than 20%
- Modern energy-rated windows not only reflect heat back into your home but will also retain heat from solar gain
- Triple-glazing improves energy efficiency, achieving significantly lower U-values. It also improves acoustic performance.



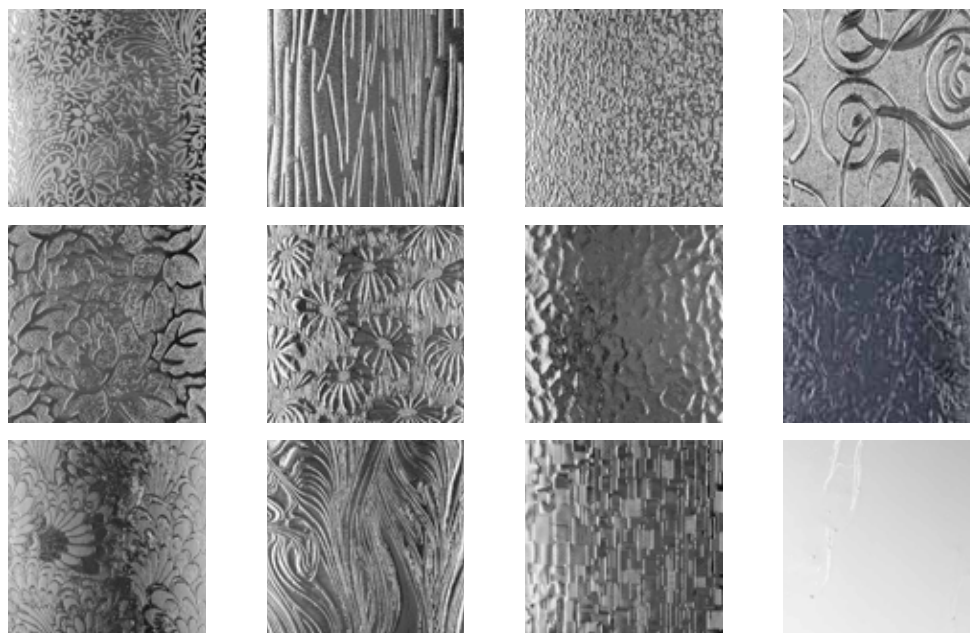


# GLAZING OPTIONS

For privacy, style or to allow more light into internal rooms, decorative glass offers a range of attractive options. From textured glass designs through to our premium range of etched glass – from classic to contemporary, the choice is yours.

Our range of stunning, high-end decorative etched glass designs is manufactured using either Pilkington Optifloat™ or Pilkington Optifloat™ Opal substrate to offer excellent light transmission in combination with various levels of privacy. The range is available in a variety of contemporary and traditional designs, each with a modern opaque appearance which is both functional and attractive.

All the designs in the Pilkington Oriel Collection have a matt appearance with a smooth and durable surface to provide a guaranteed uniform surface finish, ideally suited for use in a wide range of domestic and commercial application.



# PROTECTING THE ENVIRONMENT

---

We all want to do our best to minimise our impact on the environment - that's why we install EcoSpec profiles from Spectus Window Systems.



By choosing high-performance PVC-U windows you are not only improving thermal efficiency in your home, you're also reducing your environmental impact by using sustainable, recycled materials without compromising performance or aesthetic appeal.

## Frames

Reduce, re-use, re-cycle are the guiding principles to minimise environment impact, and our windows and doors satisfy all three. We reduce the requirement for new PVCu therefore reducing oil consumption and carbon emissions. Spectus Systems re-use any waste PVCu created during the manufacturing processes. Spectus Systems can re-cycle PVCu windows and doors that are being replaced and by using innovative technology we re-cycle them back into Ecospec products.

## High Performance levels

EcoSpec products will meet exactly the same high performance criteria that you have come to expect from modern windows and conservatories. Spectus products can exceed all regulatory requirements for security, safety, durability, thermal and acoustic insulation.

## Quality and stylish looks

EcoSpec products are not only better for the environment but come in a range of pleasing aesthetic options throughout our product range which will complement the look of your home.